

## WHAT IS NODES?

The Cooperative Studies Program (CSP) Network of Dedicated Enrollment Sites (NODES) is a consortium of VA Health Care Systems that have facility-based teams dedicated to conducting CSP studies with enhanced overall performance, execution and compliance.

These teams are collaborative, experienced and knowledgeable in all aspects of efficient management and conduct of CSP multi-site research.

Built upon six primary ELEMENTS, NODES shares facility-derived best practices and provides local insights on METHODS & TOOLS to CSP partners throughout the lifecycle of a CSP trial.

While not every VA has a NODES, this consortium is available to provide guidance and "Boots-on-the-Ground" expertise to any site participating in a CSP trial.

## CONTACT US TO LEARN MORE

Email [CSPNODES@va.gov](mailto:CSPNODES@va.gov)  
Website <http://www.research.va.gov/programs/csp/nodes.cfm>

## NODES LOCATIONS

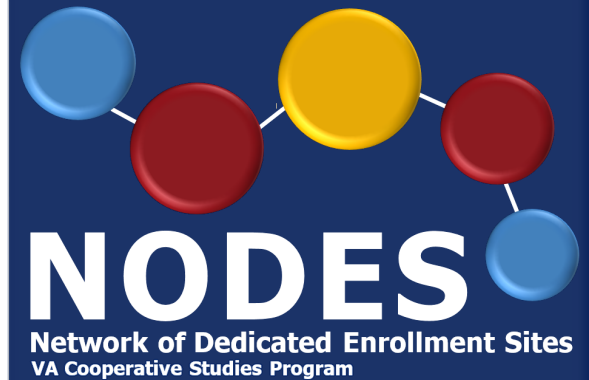


 *Initial Sites 2012*

 *Expansion Sites 2022*

**TO ALL OUR VETERANS**  
*Thank you for your service and participation in VA research.*

## VA COOPERATIVE STUDIES PROGRAM



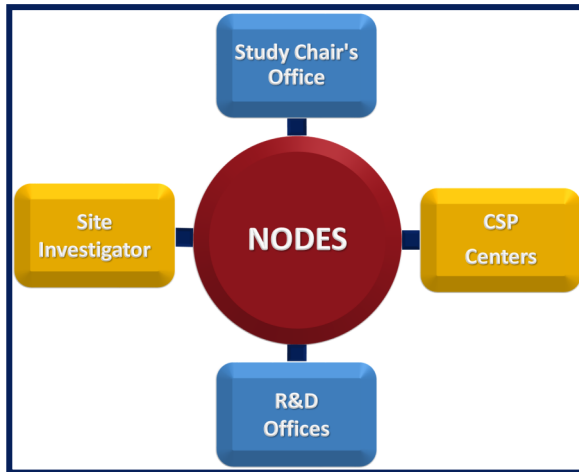
**VA**

U.S. Department  
of Veterans Affairs

# NODES ELEMENTS

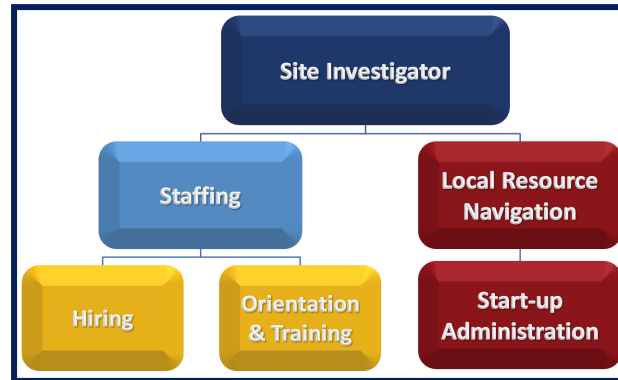
## CSP COLLABORATION

NODES works with key stakeholders throughout the lifecycle of a study.



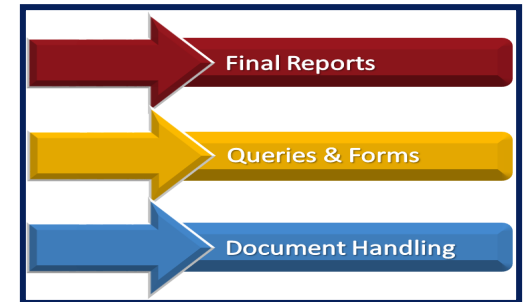
## SITE INITIATION

NODES helps identify ways to reduce logistical and staffing barriers.



## STUDY CLOSE-OUT

NODES provides direction on local site facilitation of closing out a study.



## COMMUNITY NETWORKING

NODES strives to build a stronger clinical research environment.



## STUDY DESIGN AND PLANNING

NODES provides recommendations from the site perspective.



## ACTIVE STUDY PHASE

NODES provides guidance to CSP study teams to achieve site success.



## NODES METHODS & TOOLS

Aiming to support the execution, logistics, efficiency, management, experience, network, teamwork and standards of VA Clinical Trials.